

SPIRULINA

Feed supplement for live food

As part of New Era's objective to make the latest innovation accessible to aquarists we have developed a range of superior enrichment products that ensure optimum nutritional value of first feeds.

Spirulina is a blue-green cyanobacterium rich in phytonutrients, proteins, mixed carotenoid pigments and polyunsaturated fatty acids. This includes the rare lipid, gamma-linolenic acid, GLA (18:3 omega-6).

Used as a food supplement in both live and dry feeds, Spirulina provides an excellent source of nutritional enhancement for a wide variety of applications.

Benefits

- New Era's high quality spray-dried powder has been carefully selected for use as artemia enrichment



Available in 250g pots

LIPOSOME ENRICHMENT

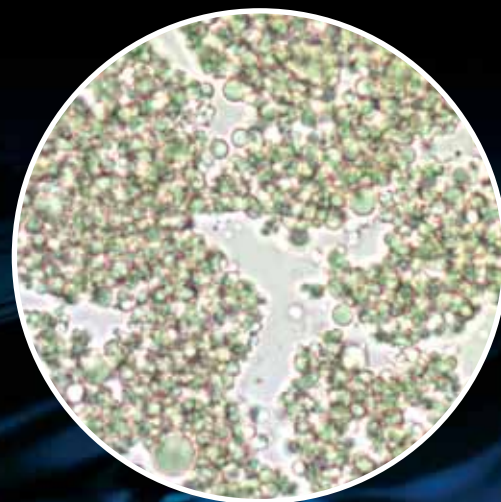
For nutritional enhancement of artemia

Our Liposome Enrichment is formulated to enhance the nutritional profile of nauplii artemia.

By combining a blend of the finest marine fish oils together with high quality natural pigments and nutraceuticals these emulsions are designed specifically for short duration enrichment applications.

Benefits

- Complementary feeding product that contains essential vitamins and minerals for optimum feed enrichment
- Ideal for use with instar II and III nauplii



Available in 100ml bottles